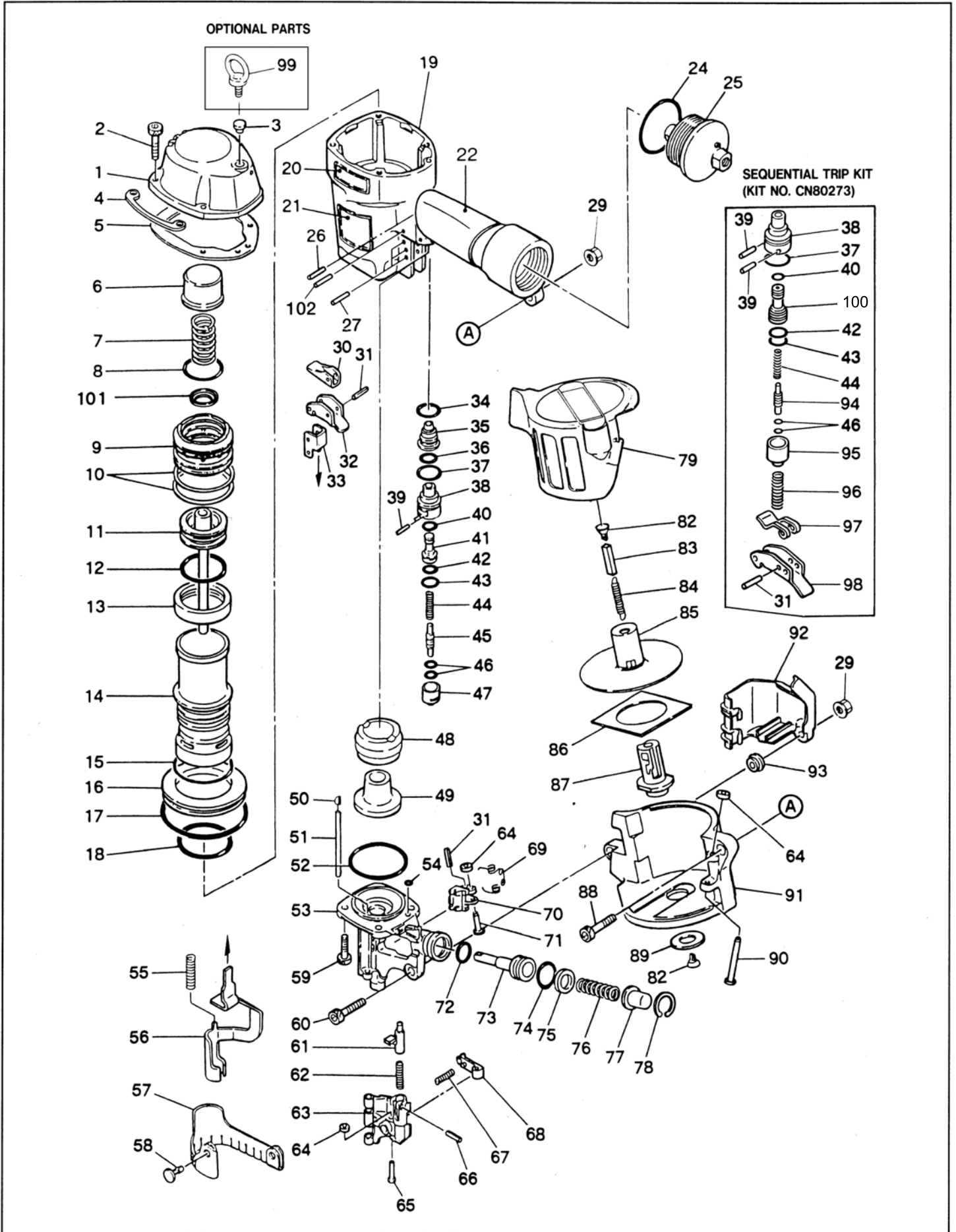


CN70

HEAVY DUTY COIL NAILER



Tool Model	Part NO	Part Code	Description
CN70	1	CN81205	CYLINDER CAP UNIT (CN34422 replaced)
CN70	2	BB40422	BOLT 6X30 FOR CC00402)(REPLACES BB40438+CC49408)
CN70	3	TA12319	GROMMET
CN70	4	CN37550	PROTECTOR (CN35766 replaced)
CN70	5	CN37549	CYLINDER CAP SEAL (CN34467 replaced)
CN70	6	CN37525	PISTON STOP (CN31555 replaced)
CN70	7	KK23195	SPRING 3195
CN70	8	HH19142	O-RING A 3X41.6
CN70	9	CN37526	HEAD VALVE PISTON (CN35826 replaced)
CN70	10	HH19195	O-RING 3X56.8 851438
CN70	11	CN81204	MAIN PISTON UNIT (CN31657 replaced)
CN70	12	HH19196	O-RING 1A 4.9X43 851439
CN70	13	CN37527	CYLINDER SEAL (CN31560 replaced)
CN70	14	CN37532	CYLINDER (CN31558 replaced)
CN70	15	HH19192	O-RING 3.1X56.5
CN70	16	CN37524	CYLINDER RING (CN31559 replaced)
CN70	17	HH12117	O-RING AG85
CN70	18	HH11169	O-RING AP56
CN70	19	CN37546	FRAME (CN34441 replaced)
CN70	20	CN34426	LABEL(CN70)
CN70	21	CN37439	WARNING LABEL (CN34879 replaced)
CN70	22	CN34703	GRIP COVER
CN70	24	HH12102	O-RING 1 AG 50
CN70	25	CN81221	END CAP ASSY (CN34455 replaced)
CN70	26	FF21229	W.S.PIN 3X20
CN70	27	FF21221	ROLL PIN 3X25
CN70	29	CC00402	NUT M6
CN70	30	CN37424	CONTACT LEVER (TA10506 replaced)
CN70	31	FF21220	PIN 3X16 N10098
CN70	32	CN37423	TRIGGER (TA10505 replaced)
CN70	33	CN37553	CONTACT ARM GUIDE (CN35855 replaced)
CN70	34	HH11159	O-RING ARP568-016 86459
CN70	35	CN37529	TRIGGER VALVE GAGE (CN31661 replaced)
CN70	36	HH11151	O-RING ARP568-013 N10067
CN70	37	HH11138	O-RING AP20
CN70	38	CN32247	TRIGGER VALVE HOUSING(REPLACES CN/KN10387)
CN70	39	FF30161	PIN 161
CN70	40	HH11119	O-RING AP6 N10027
CN70	41	CN31589	PILOT VALVE
CN70	42	HH11209	O-RING 1BP7 N10028
CN70	43	HH11113	O-RING AP9 N5528
CN70	44	KK24123	COMPRESSION SPRING 4123
CN70	45	CN31347	TRIGGER VALVE STEM
CN70	46	HH11901	O-RING 1.4 X 2.5 CN65020
CN70	47	CN31346	TRIGGER VALVE CAP
CN70	48	CN31563	BUMPER A
CN70	49	CN31564	BUMPER B
CN70	50	CN31594	PIN HOLDER
CN70	51	FF31127	PIN 1127
CN70	52	HH19139	O-RING A 1.5X53.5
CN70	53	CN37521	NOSE (CN34432 replaced)

Tool Model	Part NO	Part Code	Description
CN70	54	HH19125	O-RING A1.6X4.2 CN65064
CN70	55	KK23223	SPRING 3223
CN70	56	CN38317	CONTACT ARM UNIT, REPLACES CN35827
CN70	57	CN31582	DUST COVER
CN70	58	CN31083	HOOK DUST COVER
CN70	59	BB40443	SCREW M8 X 28
CN70	60	BB40457	BOLT 6X38 FOR CC00402)(REPLACES BB40469)
CN70	61	CN37371	DOOR LATCH (CN30587 replaced)
CN70	62	KK23123	SPRING 3123 CN65054
CN70	63	CN37522	DOOR (CN34427 replaced)
CN70	64	EE39602	WASHER 7 CN65059 N10056(FORMER EE39601/EE396
CN70	65	FF41286	PIN 1286
CN70	66	FF21234	W.S. PIN 3 X 12 CN65055
CN70	67	KK23109	SPRING 3109 CN65057
CN70	68	CN37523	CHECK PAWL (CN30584 replaced)
CN70	69	KK33058	SPRING 3058
CN70	70	CN31568	FEED PAWL
CN70	71	FF41263	PIN 1263
CN70	72	HH11132	O-RING 1AP10A CN65072
CN70	73	CN37537	FEED PISTON (CN31569 replaced)
CN70	74	HH11143	O-RING AP21 851437
CN70	75	CN37528	FEED PISTON STOP (CN31570 replaced)
CN70	76	KK23225	SPRING 3225
CN70	77	CN37538	SPRING COLOR (CN31571 replaced)
CN70	78	JJ22407	C-RING 26
CN70	79	CN37552	MAGAZINE CAP (CN35828 replaced)
CN70	82	CN37383	RECEIVER,SPRING (CN30602 replaced)
CN70	83	CN30601	SPACER CN65091
CN70	84	KK13144	SPRING 3144 (SUPERCEDES KK13040)
CN70	85	CN31575	NAIL SUPPORT UNIT
CN70	86	CN31578	SPACER
CN70	87	CN37530	MAGAZINE POST (CN31579 replaced)
CN70	88	BB40487	SCREW M6X35(REPLACES BB40469)
CN70	89	EE39608	RUBBER WASHER 21
CN70	90	FF41287	PIN 1287
CN70	91	CN37545	MAGAZINE (CN34431 replaced)
CN70	92	CN37535	CONTACT ARM COVER (CN31566 replaced)
CN70	93	CN32170	COLLAR
CN70	94	CN31715	TRIGGER VALVE STEM CN-670DS
CN70	95	CN31716	TRIGGER VALVE CAP CN-670DS
CN70	96	KK23228	SPRING 3228
CN70	97	CN34300	CONTACT LEVER DS
CN70	98	CN30276	TRIGGER (S.T.)
CN70	99	BB10401	EYE BOLT 8X15
CN70	100	CN33627	PILOT VALVE
CN70	101	CN37547	HEAD VALVE WASHER (CN34453 replaced)
CN70	102	FF21611	ROLL PIN 3X32 AW
CN70	103	CN80548	TRIGGER VALVE KIT(SN90A)