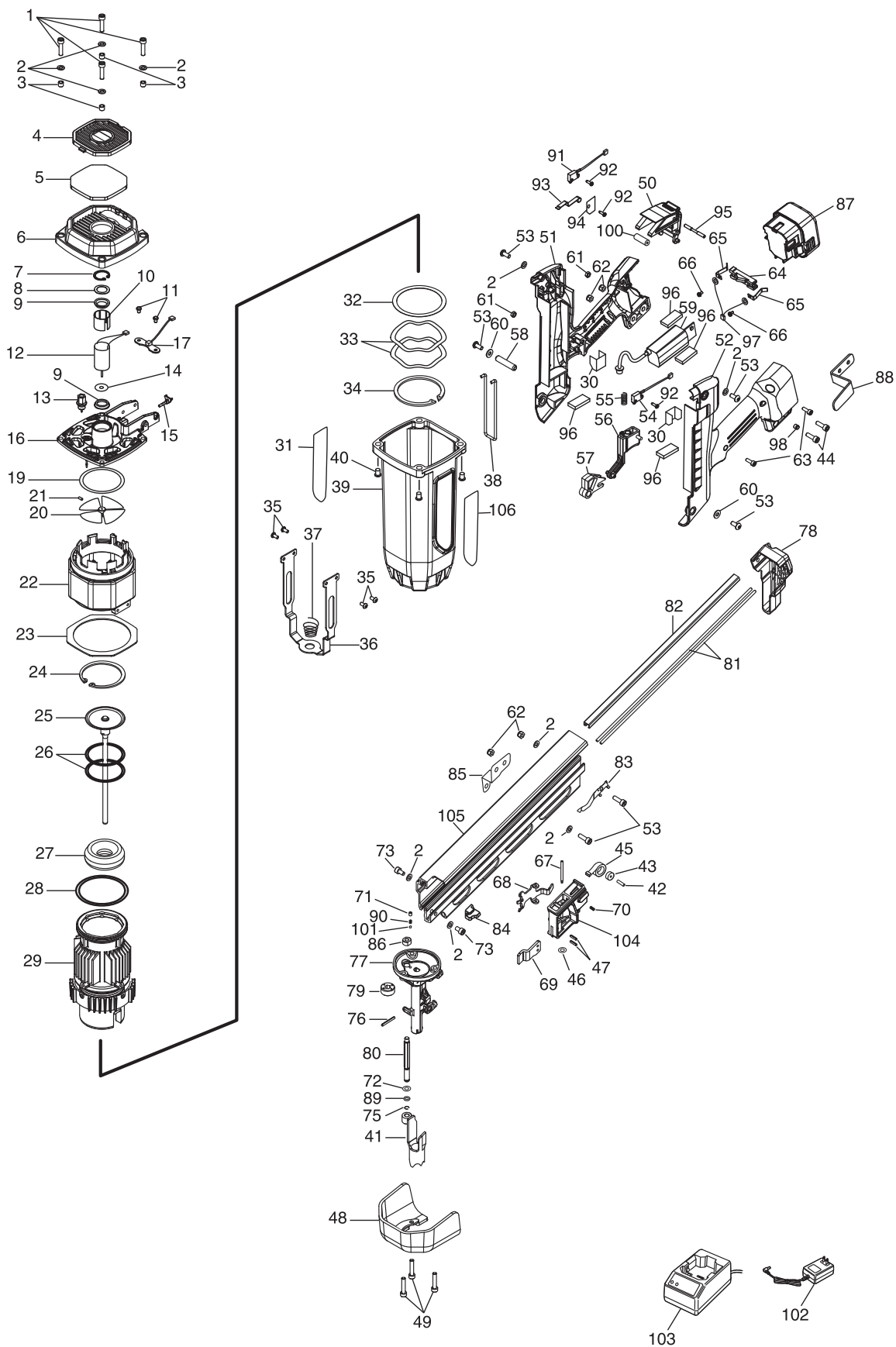


# GS683CH-EX

Cordless Nailer



<b>Tool Model</b>	<b>Part NO</b>	<b>Part Code</b>	<b>Description</b>
GS683CH-EX	1	BB40706	SCREW M5X22
GS683CH-EX	2	EE31121	WASHER 1-5
GS683CH-EX	3	FF51520	PIN 1520
GS683CH-EX	4	GN10002	AIR FILTER COVER
GS683CH-EX	5	GN11038	AIR FILTER, REPLACES GN11096
GS683CH-EX	6	GN10107	Cylinder Cap
GS683CH-EX	7	JJ22409	INTERNAL LOCK RING 22
GS683CH-EX	8	EE39719	PLANE WASHER 15X21.8X0.5
GS683CH-EX	9	GN10448	MOTOR MOUNT, REPLACES GN12052
GS683CH-EX	10	GN10449	MOTOR SLEEVE
GS683CH-EX	11	AA01701	PAN HEAD SCREW 4X8 WITH WASHER
GS683CH-EX	12	GN70098	MOTOR UNIT
GS683CH-EX	13	GN80036	3.82SPARK PLUG ASSY, REPLACES GN70005
GS683CH-EX	14	GN10026	WASHER
GS683CH-EX	15	GN10442	NOZZLE
GS683CH-EX	16	GN10465	CYLINDER HEAD, REPLACES GN10447
GS683CH-EX	17	GN70137	CONNECTION BOARD UNIT REPLACES GN70009
GS683CH-EX	19	HH14165	O-RING AS568-229A
GS683CH-EX	20	GN70001	FAN UNIT
GS683CH-EX	21	AA71406	SCREW M4X4
GS683CH-EX	22	GN10463	COMBUSTION CHAMBER, REPLACES GN10011
GS683CH-EX	23	GN10456	AIR DAM
GS683CH-EX	24	GN10018	RETAINING RING
GS683CH-EX	25	GN70088	PISTON
GS683CH-EX	26	GN10021	PISTON RING
GS683CH-EX	27	GN10691	BUMPER
GS683CH-EX	28	HH19606	O-RING
GS683CH-EX	29	GN70126	CYLINDER
GS683CH-EX	30	GN10457	TRIGGER GUIDE
GS683CH-EX	31	GN10437	WARNING LABEL
GS683CH-EX	32	GN10015	MID-CHECK WASHER
GS683CH-EX	33	GN10016	MID-CHECK SPRING
GS683CH-EX	34	GN11102	MID-CHECK RETAINING RING, REPLACES GN10017
GS683CH-EX	35	BB41407	SCREW M5X8
GS683CH-EX	36	GN11204	CAGE, REPLACES GN11157, GN10459
GS683CH-EX	37	KK83009	CONICAL SPRING 3009
GS683CH-EX	38	GN10043	LOCK-OUT BAR
GS683CH-EX	39	GN80046	FRAME, REPLACES GN10010
GS683CH-EX	40	GN10060	INSERT NUT
GS683CH-EX	41	GN70057	CONTACT ARM UNIT
GS683CH-EX	42	FF31572	PIN 1572
GS683CH-EX	43	GN10424	SPRING COLLAR
GS683CH-EX	44	BB40705	SCREW M5X20
GS683CH-EX	45	KK44021	SPIRAL SPRING 4021
GS683CH-EX	46	EE39609	RUBBER WASHER 1.8X6.2
GS683CH-EX	47	FF21239	PIN 4X12
GS683CH-EX	48	GN70125	DUST SHIELD, REPLACES GN70083
GS683CH-EX	49	BB40708	SCREW M5X25
GS683CH-EX	50	GN10455	FUEL COVER
GS683CH-EX	51	GN11179	GRIP R (CH-EX)
GS683CH-EX	52	GN11180	GRIP L (CH-EX)

<b>Tool Model</b>	<b>Part NO</b>	<b>Part Code</b>	<b>Description</b>
GS683CH-EX	53	BB40707	SCREW M5X14
GS683CH-EX	54	GN70129	TRIGGER SWITCH UNIT
GS683CH-EX	55	KK23975	COMP SPRING 3975, REPLACES KK23913
GS683CH-EX	56	GN70096	TRIGGER (ASSY)
GS683CH-EX	57	GN10460	SAFETY CAM
GS683CH-EX	58	GN10042	SAFTY CAM BUSHING
GS683CH-EX	59	GN70131	CONTROL UNIT, REPLACES GN70007
GS683CH-EX	60	EE39172	PLAIN WASHER 5.1X12X1.2
GS683CH-EX	61	CC42404	NUT M4
GS683CH-EX	62	CC49411	SPECIAL NUT M5
GS683CH-EX	63	BB40441	BOLT 4X12
GS683CH-EX	64	GN10059	ELECTRODE BLOCK
GS683CH-EX	65	GN10058	ELECTRODE PLATE
GS683CH-EX	66	AA01106	SCREW 3X6 WITH WASHER
GS683CH-EX	67	FF31603	PIN 1603, REPLACED BY KN12662
GS683CH-EX	68	GN10570	FOLLOWER
GS683CH-EX	69	GN10571	LOCK PLATE
GS683CH-EX	70	KK23932	COMP. SPRING 3932
GS683CH-EX	71	AA74403	SCREW 4 X 5
GS683CH-EX	72	EE39721	WASHER
GS683CH-EX	73	BB40822	HEX BOLT 5X9
GS683CH-EX	74	GN10046	SPONGE SPACER
GS683CH-EX	75	GN10440	ADJUSTER STOPPER
GS683CH-EX	76	FF21221	ROLL PIN 3X25
GS683CH-EX	77	GN10572	NOSE
GS683CH-EX	78	GN10574	MAGAZINE FOOT (USA)
GS683CH-EX	79	GN10429	ADJUST DIAL
GS683CH-EX	80	GN11156	CONCTACT BOLT, REPLACES GN10430
GS683CH-EX	81	GN10575	NAIL GUIDE
GS683CH-EX	82	GN10576	NAIL COVER
GS683CH-EX	83	GN10433	NAIL STOPPER
GS683CH-EX	84	GN10434	PUSHER STOPPER
GS683CH-EX	85	GN10579	TAIL HANGER
GS683CH-EX	86	GN10438	CONTACT NUT
GS683CH-EX	88	GN10520	BELT HOOK
GS683CH-EX	89	HH19125	O-RING 1A1, 6X4.2
GS683CH-EX	90	KK23643	COMPRESSION SPRING 3643
GS683CH-EX	91	GN70128	MOTOR SWITCH UNIT, REPLACES GN70010
GS683CH-EX	92	AA31101	+, TAPPING SCREW
GS683CH-EX	93	GN11161	SWITCH LEVER, REPLACES GN10055
GS683CH-EX	94	GN10084	SWITCH PLATE
GS683CH-EX	95	FF31293	ACTUATION PIN
GS683CH-EX	96	GN10761	SPONGE SPACER (CE)
GS683CH-EX	97	GN70013	POWER CORD HARNESS UNIT
GS683CH-EX	98	GN10083	LED LENS
GS683CH-EX	100	GN10085	RUBBER BUSHING
GS683CH-EX	101	LL71806	STEEL BALL 3
GS683CH-EX	104	GN10569	FOLLOWER HOLDER
GS683CH-EX	105	GN10573	MAGAZINE (USA)
GS683CH-EX	106	GN11137	NAME LABEL (CH)