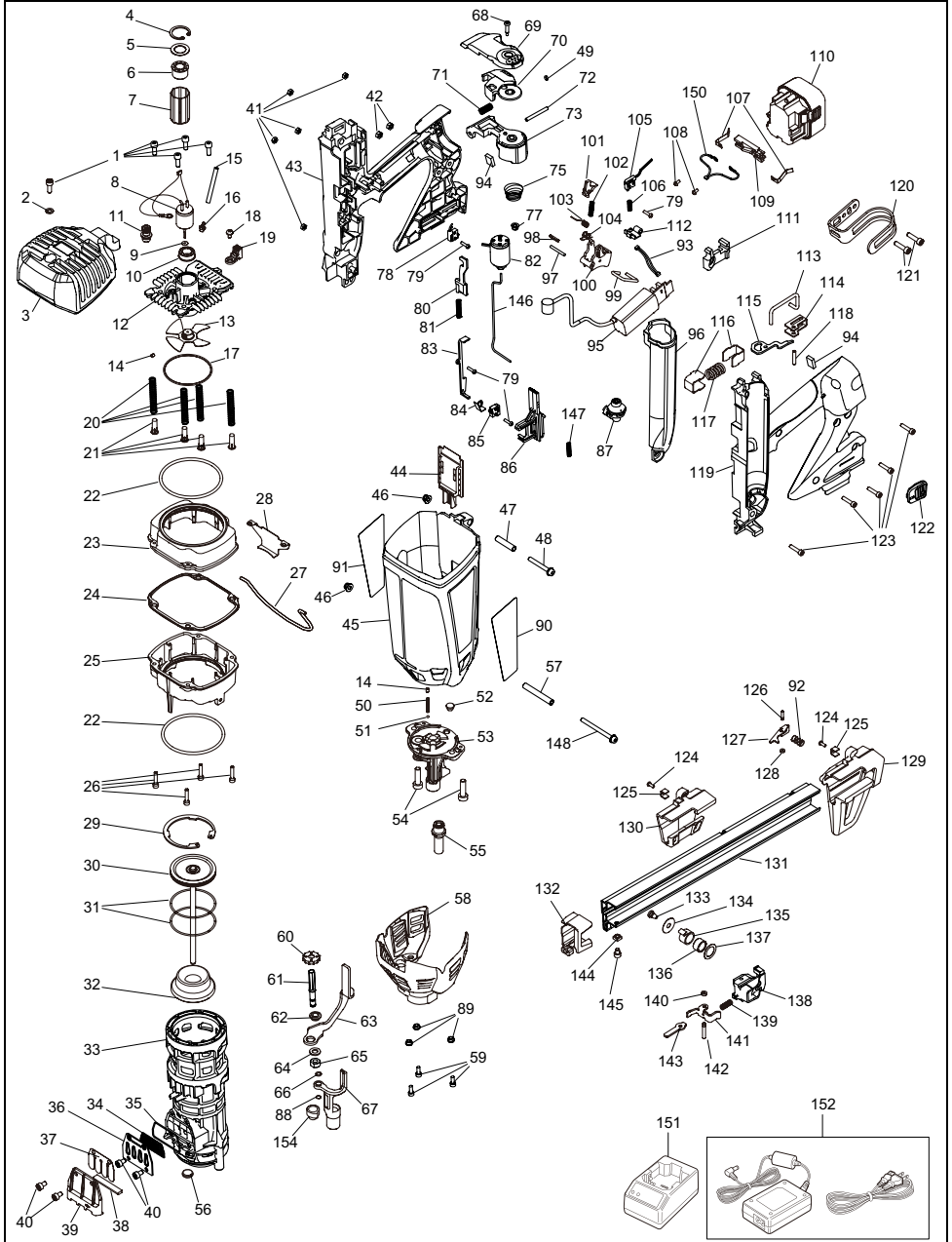


GS732C LT

EXPLODED
VIEW AND SPARE PARTS LIST

SCHEMA ECLATE ET LISTE DES
PIECES DE RECHANGE

DESPIECE DE LA MAQUINA Y LISTA
DE RECAMBIOS



| Tool Model | Part NO | Part Code | Description |
|------------|---------|-----------|---------------------------------------|
| GS732C | 1 | BB40408 | BOLT 5X14 |
| GS732C | 2 | EE39172 | PLAIN WASHER 5.1X12X1.2 |
| GS732C | 3 | GN70293 | CYLINDER CAP UNIT(GS732C) |
| GS732C | 4 | GN12053 | RETAINING RING C TYPE |
| GS732C | 5 | GN11844 | PLAIN WASHER |
| GS732C | 6 | GN11849 | MOTOR MOUNT L |
| GS732C | 7 | GN12051 | MOTOR SLEEVE |
| GS732C | 8 | GN70177 | MOTOR UNIT (GS732C) |
| GS732C | 9 | GN10026 | WASHER |
| GS732C | 10 | GN10448 | MOTOR MOUNT, REPLACES GN12052 |
| GS732C | 11 | GN80036 | 3.82SPARK PLUG ASSY, REPLACES GN70005 |
| GS732C | 12 | GN12140 | CYLINDER HEAD (GS732C) |
| GS732C | 13 | GN70001 | FAN UNIT |
| GS732C | 14 | AA74403 | SCREW 4 X 5 |
| GS732C | 15 | GN12141 | RUBBER TUBE |
| GS732C | 16 | GN11818 | TUBE FITTING M5 |
| GS732C | 17 | HH14036 | O-RING AS568-036 |
| GS732C | 18 | AA01703 | PAN HEAD SCREW 4x8 WITH WASHER |
| GS732C | 19 | GN11819 | CONNECTER HOLDER |
| GS732C | 20 | GN11820 | COMP. SPRING(CHAMBER) |
| GS732C | 21 | GN11822 | GUIDE POLE |
| GS732C | 22 | GN11821 | O-RING 4D 3.5X75.8 |
| GS732C | 23 | GN11488 | UPPER CHAMBER |
| GS732C | 24 | GN11823 | SEAL PLATE |
| GS732C | 25 | GN12092 | LOWER CHAMBER (N) |
| GS732C | 26 | GN12072 | HEXAGON SOCKETHEAD CA |
| GS732C | 27 | GN12194 | CHAMBER ARM(N) |
| GS732C | 28 | GN11485 | CHAMBER PLATE |
| GS732C | 29 | GN10221 | RETAINING RING |
| GS732C | 30 | GN70320 | MAIN PISTON UNIT |
| GS732C | 31 | GN10224 | PISTON RING |
| GS732C | 32 | GN11546 | BUMPER |
| GS732C | 33 | GN11496 | CYLINDER |
| GS732C | 34 | GN11494 | BUFFER PLATE |
| GS732C | 35 | GN11824 | REED VALVE SEAL |
| GS732C | 36 | GN11491 | VALVE BASE |
| GS732C | 37 | GN11493 | REED VALVE |
| GS732C | 38 | GN11495 | VALVE FILTER |
| GS732C | 39 | GN11492 | VALVE COVER |
| GS732C | 40 | BB40456 | BOLT 5X8 |
| GS732C | 41 | GN12185 | HEXAGON NUT WITH NYLON |
| GS732C | 42 | CC49508 | SPECIAL NUT M5 |
| GS732C | 43 | GN70290 | HANDLE R UNIT |
| GS732C | 44 | GN11501 | CHAMBER ARM GUIDE |
| GS732C | 45 | GN12145 | BODY |
| GS732C | 46 | GN12073 | HEXAGON NUT WITH FLANG |
| GS732C | 47 | GN12135 | HOLLOW SHAFT 7.2X33.5 |
| GS732C | 48 | GN12133 | HEXAGON SOCKET HEAD |
| GS732C | 49 | HH11114 | O-RING AP4 |
| GS732C | 50 | GN11828 | COMP. SPRING |
| GS732C | 51 | GN12060 | STEEL BALL 3 |

| Tool Model | Part NO | Part Code | Description |
|-------------------|----------------|------------------|---------------------------------------|
| GS732C | 52 | GN11830 | MAGAZINE BUFFER |
| GS732C | 53 | GN11524 | NOSE |
| GS732C | 54 | BB40428 | SCREW M6X25 |
| GS732C | 55 | GN11829 | NOSE TOP |
| GS732C | 56 | GN12055 | CONTACT BUMPER |
| GS732C | 57 | GN12136 | HOLLOW SHAFT 7.2X47 |
| GS732C | 58 | GN70241 | BODY COVER UNIT |
| GS732C | 59 | GN12082 | HEXAGON SOCKET HEAD CA |
| GS732C | 60 | GN11827 | ADJUST DIAL |
| GS732C | 61 | GN11525 | SCREW ROD |
| GS732C | 62 | GN11527 | ARM BUSHING |
| GS732C | 63 | GN11526 | CONTACT ARM B |
| GS732C | 64 | GN11848 | ARM WASHER |
| GS732C | 65 | GN11528 | ARM UNIT |
| GS732C | 66 | HH19722 | O-RING A1.5X5 |
| GS732C | 67 | GN11520 | CONTACT ARM C |
| GS732C | 68 | GN12159 | HEXAGON SOCKET BUTTON HEAD SCREW 4X18 |
| GS732C | 69 | GN12152 | FUEL CAP B |
| GS732C | 70 | GN12153 | FUEL LATCH |
| GS732C | 71 | GN12163 | COMPRESSION SPRING (LATCH) |
| GS732C | 72 | GN12154 | PARALLEL PIN (CAP) |
| GS732C | 73 | GN12151 | FUEL CAP A |
| GS732C | 75 | GN12162 | CORN SPRING (FUEL CAP) |
| GS732C | 77 | GN12160 | HEXAGON NUT WITH FLANG |
| GS732C | 78 | GN70309 | F-COVER SW UNIT-N |
| GS732C | 79 | AA05544 | TAP TIGHT(P) 3X12 |
| GS732C | 80 | GN12157 | FUEL SW LEVER |
| GS732C | 81 | GN12165 | COMP.SPRING |
| GS732C | 82 | GN70314 | SOLENOID VALVE ASSY-N |
| GS732C | 83 | GN12149 | PIPE COVER |
| GS732C | 84 | GN11592 | FAN SW LEVER |
| GS732C | 85 | GN70308 | FAN SW UNIT |
| GS732C | 86 | GN12131 | CONTACT ARM A |
| GS732C | 87 | GN70318 | F-CELL CONNECTION ASSY |
| GS732C | 88 | GN12059 | ADJUST STOPPER |
| GS732C | 89 | GN12081 | BODY COVER BUSH |
| GS732C | 90 | GN11954 | NAME LABEL (GS732LT USA) |
| GS732C | 91 | GN11955 | WARNING LABEL |
| GS732C | 92 | GN11588 | COMPRESSION SPRING (STOPPER) |
| GS732C | 93 | GN70316 | CONNECTION CODE UNIT |
| GS732C | 94 | GN12088 | BATTERY PROTECTOR |
| GS732C | 95 | GN70306 | CONTROL UNIT |
| GS732C | 96 | GN12192 | FUEL SIDE COVER |
| GS732C | 97 | GN12138 | PARALLEL PIN 3X27.2 |
| GS732C | 99 | GN12146 | CHAMBER LOCK BAR |
| GS732C | 103 | GN11596 | TRIGGER SPRING |
| GS732C | 105 | GN70179 | TRIGGER SW UNIT |
| GS732C | 106 | GN11593 | COMP. SPRING |
| GS732C | 107 | GN10058 | ELECTRODE PLATE |
| GS732C | 108 | AA01106 | SCREW 3X6 WITH WASHER |
| GS732C | 109 | GN10059 | ELECTRODE BLOCK |

| Tool Model | Part NO | Part Code | Description |
|-------------------|----------------|------------------|--|
| GS732C | 111 | GN12168 | LATCH B |
| GS732C | 112 | GN11508 | TRIGGER SW LEVER |
| GS732C | 113 | GN11540 | TUBE FITTING M5 |
| GS732C | 114 | GN11539 | REMOVE FRAME |
| GS732C | 115 | GN11537 | REMOVE LEVER |
| GS732C | 116 | GN11541 | REMOVE GUIDE |
| GS732C | 117 | GN11815 | COMP. SPRING |
| GS732C | 118 | FF31572 | PIN 1572 |
| GS732C | 119 | GN70292 | HANDLE L UNIT |
| GS732C | 120 | GN12132 | BELT HOOK |
| GS732C | 121 | GN12137 | HEXAGON SOCKET HEAD |
| GS732C | 122 | GN11542 | REMOVE COVER |
| GS732C | 123 | GN12184 | HEXAGON SOCKET HEAD CAP SCREW 4X20 EP |
| GS732C | 124 | GN12068 | CROSS RECESSED HEAD TA |
| GS732C | 125 | GN11583 | MAGAZINE STOPPER |
| GS732C | 126 | GN11589 | PARALLEL PIN (STOPPER) |
| GS732C | 127 | GN11534 | NAIL STOPPER |
| GS732C | 128 | GN12070 | RUBBER WASHER 1.7X6X2 REPLACES EE39609 |
| GS732C | 129 | GN12186 | MAGAZINE FOOT C5 |
| GS732C | 130 | GN11582 | MAGAZINE HANGER |
| GS732C | 131 | GN12083 | MAGAZINE32L |
| GS732C | 132 | GN12084 | MAGAZINE COVER 32 |
| GS732C | 133 | GN12061 | SPRING STOPPER |
| GS732C | 134 | GN12063 | SPRING COVER A |
| GS732C | 135 | GN12067 | CONSTANT FORCE SPRING |
| GS732C | 136 | GN12065 | SPRING COLLAR |
| GS732C | 137 | GN12064 | SPRING COVER B |
| GS732C | 138 | GN11531 | FOLLOWER HOLDER |
| GS732C | 139 | GN12066 | COMP. SPRING (FOLLOWER) |
| GS732C | 140 | GN12062 | RUBBER WASHER 7 |
| GS732C | 141 | GN11530 | FOLLOWER |
| GS732C | 142 | GN11591 | PARALLEL PIN (FOLLOWER) |
| GS732C | 143 | GN11580 | ANTIFIRE PLATE |
| GS732C | 144 | GN11590 | SQUARE NUT M5 |
| GS732C | 145 | GN12069 | HEXAGON SOCKET HEAD CA |
| GS732C | 146 | GN12148 | FUEL PIPE |
| GS732C | 147 | GN12087 | COMP. SPRING (CTA-A) |
| GS732C | 148 | GN12134 | HEXAGON SOCKET HEAD |
| GS732C | 150 | GN70013 | POWER CORD HARNESS UNIT |
| GS732C | 152 | GN80187 | ADAPTER KIT |
| GS732C | 154 | GN12180 | SCREW COVER |
| GS732C | 156 | BB40703 | BOLT 5X10 |
| GS732C | 157 | GN12187 | SMALL WASHER |
| GS732C | 158 | GN12188 | INNER COLLAR |
| GS732C | 161 | GN12193 | GAP RUBBER |
| GS732C | 201 | GN80206 | MAGAZINE ASSY 38S |
| GS732C | 201 | GN80208 | MAGAZINE ASSY 38L |
| GS732C | 201 | GN80284 | MAGAZINE ASSY 32L (N) |
| GS732C | 202 | GN80257 | MAGAZINE FOOT ASSEMBLY (KIT#1) |
| GS732C | 203 | GN80258 | FOLLOWER ASSEMBLY (KIT#2) |
| GS732C | 204 | GN80273 | BATTERY CONNECTOR ASSY (#3) |

| Tool Model | Part NO | Part Code | Description |
|-------------------|----------------|------------------|--|
| GS732C | 205 | GN80259 | DIAL ADJUSTER STOP (KIT#4) |
| GS732C | 206 | GN80260 | MOTOR KIT (KIT#5) |
| GS732C | 207 | GN80262 | COMBUSTION CHAMBER SPRING SET (KIT#7) |
| GS732C | 208 | GN80263 | COMBUSTION CHAMBER SPRING GUIDES (KIT#8) |
| GS732C | 209 | GN80264 | READ VALVE SEAL SET (KIT#9) |
| GS732C | 210 | GN80265 | PISTON ASSY (KIT#10) |
| GS732C | 211 | GN80266 | REED VALVE ASSY (KIT#11) |
| GS732C | 212 | GN80267 | MAGAZINE LOCK SET (KIT#12) |
| GS732C | 213 | GN80268 | DEPTH ADJUSTMENT SET (KIT#13) |
| GS732C | 215 | GN80270 | MOTER BUFFER SET (KIT#16) |
| GS732C | 216 | GN80271 | BODY COVER BOLT SET (KIT#17) |
| GS732C | 217 | GN80274 | FAN ASSY SET (KIT#18) |
| GS732C | 218 | GN70190 | TRIGGER ASSEMBLY KIT (KIT#19) |
| GS732C | 219 | GN70242 | COMBUST.CHAMBER ASSEMBLY (KIT#20) |