

# HN90F

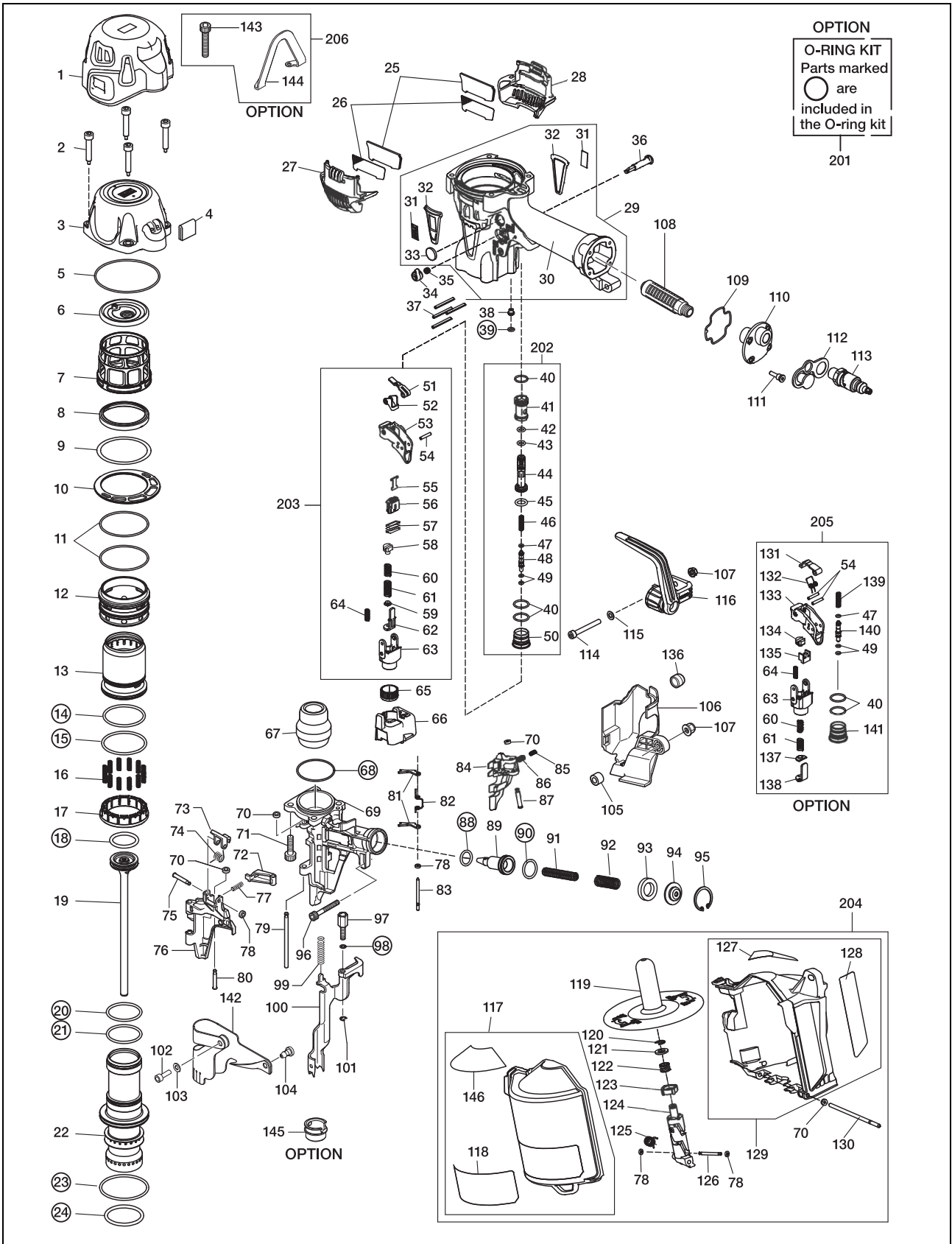
**EXPLODED VIEW AND SPARE PARTS LIST**

**SCHEMA ECLATE ET LISTE DES PIECES DE RECHANGE**

**DESPIECE DE LA MAQUINA Y LISTA DE RECAMBIOS**

**EINZELTEILDARSTELLUNG UND ERSATZTEILLISTE**

**ESPLOSO DEI COMPONENTI ED ELENCO DELLE PARTI DI RICAMBIO**



Tool Model	Part No	Part Code	Description
HN90F	1	HN12229	CYLINDER CAP PROTECTOR
HN90F	2	HN10067	SCREW 6 X35
HN90F	3	HN12558	CYLINDER CAP
HN90F	4	HN12247	PILOT FILTER
HN90F	5	HH14040	O-RING ARP568-040
HN90F	6	HN12215	PISTON STOP
HN90F	7	HN12239	PISTON STOP GUIDE
HN90F	8	HN12353	SWEEPER
HN90F	9	HN12382	PISTON STOP GUIDE PLATE
HN90F	10	HN12243	CYLINDER STOP GUIDE PLATE
HN90F	11	HH14034	O-RING ARP568-034
HN90F	12	HN12218	HEAD VALVE GUIDE
HN90F	13	HN12217	HEAD VALVE PISTON
HN90F	14	HH11136	O-RING ARP568-132
HN90F	15	HH14902	O-RING AS 568-134
HN90F	16	KK23650	COMP SPRING 3650
HN90F	17	HN12220	SPRING HOLDER
HN90F	18	HH11806	O-RING P27
HN90F	19	HN70375	Main Piston
HN90F	20	HH19915	O-RING 2.6X34.6
HN90F	21	HH19167	O-RING A 2.6X34.8 (CN-57)
HN90F	22	HN12470	CYLINDER
HN90F	23	HH11156	O-RING ARP568-137
HN90F	24	HH11101	O-RING 1AP38
HN90F	25	HN12225	EXHAUST FILTER B
HN90F	26	HN12224	EXHAUST FILTER A
HN90F	27	HN12223	EXHAUST COVER L
HN90F	28	HN12244	EXHAUST COVER R
HN90F	29	HN81347	FRAME ASSY
HN90F	30	HN12248	GRIP COVER
HN90F	31	PJ11961	NAME PLATE
HN90F	32	HN12115	NAME RUBBER
HN90F	33	HN12549	BLIND PLAT
HN90F	34	HN12123	TRIGGER LOCK DIAL
HN90F	35	KK23507	SPRING 3507
HN90F	36	CN35075	TRIGGER LOCK LEVER
HN90F	37	FF21235	SPRING PIN 3X30
HN90F	38	HN10820	FEED NOZZLE
HN90F	39	HH19722	O-RING A1.5X5
HN90F	40	HH12105	O-RING 1A 1.5 X 12.8 N5521
HN90F	41	HN10016	TRIGGER VALVE HOUSING
HN90F	42	HH11820	O-RING P6
HN90F	43	HH11208	O-RING BP6
HN90F	44	HN12406	PILOT VALVE
HN90F	45	HH11132	O-RING 1AP10A CN65072
HN90F	46	KK29104	COMPRESION SPRING 9104
HN90F	47	HH19707	O-RING A1.4X2.5
HN90F	48	HN12407	TRIGGER VALVE STEM
HN90F	49	HH19214	O-RING 1B 1.5X3
HN90F	50	HN12172	TRIGGER VALVE CAP
HN90F	51	HS10143	CONTACT LEVER A

Tool Model	Part No	Part Code	Description
HN90F	52	HS10144	CONTACT LEVER B
HN90F	53	HS10147	TRIGGER
HN90F	54	FF22402	SPRING PIN 3X16 (LIGHT LOAD)
HN90F	55	HS10146	SWITCH LEVER B
HN90F	56	HS10145	SWITCH LEVER A
HN90F	57	CN34500	LEVER SPRING
HN90F	58	HN12370	ARM GUIDE PIN
HN90F	59	HN10785	CONTACT BUMPER
HN90F	60	KK23735	COMPRESSION SPRING 3735
HN90F	61	KK23736	COMPRESSION SPRING 3736
HN90F	62	HN10818	CONTACT ARM A
HN90F	63	HN10784	ARM GUIDE
HN90F	64	KK23129	COMPRESSION SPRING 3129
HN90F	65	HN10026	ADJUST DIAL
HN90F	66	HN12238	ADJUST SPACER
HN90F	67	HN12465	BUMPER
HN90F	68	HH14734	O-RING AS568-031
HN90F	69	HN12606	Nose
HN90F	70	EE39602	WASHER 7
HN90F	71	BB40224	SCREW 7X25
HN90F	72	HN10797	RATCHET
HN90F	73	CN33679	DOOR LUTCH
HN90F	74	KK33375	SPRING 3375
HN90F	75	FF41599	PIN 1599 (REPLACES FF41587)
HN90F	76	HN12380	DOOR
HN90F	77	KK23912	COMP. SPRING 3912
HN90F	78	EE39609	RUBBER WASHER 1.8X6X2
HN90F	79	FF31520	STRAIGHT PIN 1520
HN90F	80	FF41817	STEP PIN 1817
HN90F	81	CN35336	CHECK PAWL
HN90F	82	KK33337	SPRING 3337
HN90F	83	FF31294	PIN 1294
HN90F	84	HN10842	FEED PAWL
HN90F	85	KK23710	COMP. SPRING 3710
HN90F	86	KK23788	COMP. SPRING 3788
HN90F	87	FF42216	STEP PIN 2216
HN90F	88	HH11111	O-RING 1AP 14 N5522(REPLACES TA15260)
HN90F	89	HN10463	FEED PISTON
HN90F	90	HH11107	O-RING AP18
HN90F	91	KK23926	COMP. SPRING 3926
HN90F	92	KK23927	COMP. SPRING 3927
HN90F	93	CN31570	CN37528 : FEED PISTON STOP
HN90F	94	HN10464	COMP. SPRING
HN90F	95	JJ22407	C-RING 26
HN90F	96	BB40460	BOLT 5 X 28
HN90F	97	HN12361	CONTACT BOLT
HN90F	98	HH11903	O-RING 1A 1.2 X 4 T29051(REPLACES TA15277)
HN90F	99	KK23952	COPM. SPRING 3952
HN90F	100	HN70378	CONTACT ARM B UNIT
HN90F	101	JJ10404	E-RING 3.2
HN90F	102	BB40427	T-BOLT 4 X 8(REPLACES TA15544)

Tool Model	Part No	Part Code	Description
HN90F	103	EE39172	WASHER 5.1X12X1.2
HN90F	104	CN31083	HOOK, DUST COVER
HN90F	105	HN12548	MAGAZINE SPACER
HN90F	106	HN10808	ARM COVER
HN90F	107	CC00401	ELASTIC STOP NUT M5
HN90F	108	TA17024	FILTER A
HN90F	109	HN12070	END CAP SEAL
HN90F	110	HN12410	END CAP
HN90F	111	BB40704	BOLT 4X12
HN90F	112	HN10316	END PLUG CAP
HN90F	113	HN70264	AIR PLUG H-FPM
HN90F	114	BB40492	T-BOLT 5X42
HN90F	115	EE31121	WASHER 1-5 (BLACK)
HN90F	116	HN70292	HOOK ASSY
HN90F	117	HN81352	MAGAZINE CAP (AFTER)
HN90F	118	HN12467	NAME LABEL
HN90F	119	CN38159	NAIL SUPPORT
HN90F	120	CN38165	E-RETAINING RING 6
HN90F	121	CN38161	PLANE WASHER 8
HN90F	122	CN38164	COMPRESSION SPRING 8164
HN90F	123	CN38163	BASE DIAL
HN90F	124	CN38160	NAIL POST
HN90F	125	KK33396	TOSSION SPRING
HN90F	126	FF31642	STRAIGHT PIN 8168
HN90F	127	HN12464	WARNING LABEL
HN90F	128	HN12468	NAILSUPPORT SWITCH LABEL
HN90F	129	HN81353	MAGAZINE (AFTER)
HN90F	130	HN12098	STRAIGHT PIN(MAGAZINE HINGE)
HN90F	131	HN10100	CONTACT LVER
HN90F	132	KK33300	SPRING 3300
HN90F	133	HS10118	TRIGGER
HN90F	134	HN10400	ARM GUIDE PIN
HN90F	135	HS10117	CONTACT ARM A GUIDE
HN90F	136	HN10817	CONTACT TIP
HN90F	137	HN10357	CONTACT BUMPER
HN90F	138	HN10401	CONTACT ARM A
HN90F	139	KK23619	COMP. SPRING 3619
HN90F	140	HN10353	TRIGGER VALVE STEM
HN90F	141	HA11031	TRIGGER VALVE CAP
HN90F	142	HN12471	DUST COVER
HN90F	143	HS10704	SCREW 6X38
HN90F	144	HN10856	FRAME HANGER
HN90F	145	HN70337	NOSE ATTACHMENT ASSY FOR HN90F
HN90F	201	HN81354	O-RING KIT
HN90F	202	HN81307	TRIGGER VALVE ASSY
HN90F	203	HN81350	ARM GUIDE KIT
HN90F	204	HN81351	MAGAZINE ASSY
HN90F	205	HN81348	SEQUENTIAL TRIP KIT
HN90F	206	HN81355	BODY HANGER KIT

Tool Model	Part No	Part Code	Description
HN90F	1	HN12229	CYLINDER CAP PROTECTOR
HN90F	2	HN10067	SCREW 6 X35
HN90F	3	HN12558	CYLINDER CAP
HN90F	4	HN12247	PILOT FILTER
HN90F	5	HH14040	O-RING ARP568-040
HN90F	6	HN12215	PISTON STOP
HN90F	7	HN12239	PISTON STOP GUIDE
HN90F	8	HN12353	SWEEPER
HN90F	9	HN12382	PISTON STOP GUIDE PLATE
HN90F	10	HN12243	CYLINDER STOP GUIDE PLATE
HN90F	11	HH14034	O-RING ARP568-034
HN90F	12	HN12218	HEAD VALVE GUIDE
HN90F	13	HN12217	HEAD VALVE PISTON
HN90F	14	HH11136	O-RING ARP568-132
HN90F	15	HH14902	O-RING AS 568-134
HN90F	16	KK23650	COMP SPRING 3650
HN90F	17	HN12220	SPRING HOLDER
HN90F	18	HH11806	O-RING P27
HN90F	19	HN70375	Main Piston
HN90F	20	HH19915	O-RING 2.6X34.6
HN90F	21	HH19167	O-RING A 2.6X34.8 (CN-57)
HN90F	22	HN12470	CYLINDER
HN90F	23	HH11156	O-RING ARP568-137
HN90F	24	HH11101	O-RING 1AP38
HN90F	25	HN12225	EXHAUST FILTER B
HN90F	26	HN12224	EXHAUST FILTER A
HN90F	27	HN12223	EXHAUST COVER L
HN90F	28	HN12244	EXHAUST COVER R
HN90F	29	HN81347	FRAME ASSY
HN90F	30	HN12248	GRIP COVER
HN90F	31	PJ11961	NAME PLATE
HN90F	32	HN12115	NAME RUBBER
HN90F	33	HN12549	BLIND PLAT
HN90F	34	HN12123	TRIGGER LOCK DIAL
HN90F	35	KK23507	SPRING 3507
HN90F	36	CN35075	TRIGGER LOCK LEVER
HN90F	37	FF21235	SPRING PIN 3X30
HN90F	38	HN10820	FEED NOZZLE
HN90F	39	HH19722	O-RING A1.5X5
HN90F	40	HH12105	O-RING 1A 1.5 X 12.8 N5521
HN90F	41	HN10016	TRIGGER VALVE HOUSING
HN90F	42	HH11820	O-RING P6
HN90F	43	HH11208	O-RING BP6
HN90F	44	HN12406	PILOT VALVE
HN90F	45	HH11132	O-RING 1AP10A CN65072
HN90F	46	KK29104	COMPRESION SPRING 9104
HN90F	47	HH19707	O-RING A1.4X2.5
HN90F	48	HN12407	TRIGGER VALVE STEM
HN90F	49	HH19214	O-RING 1B 1.5X3
HN90F	50	HN12172	TRIGGER VALVE CAP
HN90F	51	HS10143	CONTACT LEVER A

Tool Model	Part No	Part Code	Description
HN90F	52	HS10144	CONTACT LEVER B
HN90F	53	HS10147	TRIGGER
HN90F	54	FF22402	SPRING PIN 3X16 (LIGHT LOAD)
HN90F	55	HS10146	SWITCH LEVER B
HN90F	56	HS10145	SWITCH LEVER A
HN90F	57	CN34500	LEVER SPRING
HN90F	58	HN12370	ARM GUIDE PIN
HN90F	59	HN10785	CONTACT BUMPER
HN90F	60	KK23735	COMPRESSION SPRING 3735
HN90F	61	KK23736	COMPRESSION SPRING 3736
HN90F	62	HN10818	CONTACT ARM A
HN90F	63	HN10784	ARM GUIDE
HN90F	64	KK23129	COMPRESSION SPRING 3129
HN90F	65	HN10026	ADJUST DIAL
HN90F	66	HN12238	ADJUST SPACER
HN90F	67	HN12465	BUMPER
HN90F	68	HH14734	O-RING AS568-031
HN90F	69	HN12606	Nose
HN90F	70	EE39602	WASHER 7
HN90F	71	BB40224	SCREW 7X25
HN90F	72	HN10797	RATCHET
HN90F	73	CN33679	DOOR LUTCH
HN90F	74	KK33375	SPRING 3375
HN90F	75	FF41599	PIN 1599 (REPLACES FF41587)
HN90F	76	HN12380	DOOR
HN90F	77	KK23912	COMP. SPRING 3912
HN90F	78	EE39609	RUBBER WASHER 1.8X6X2
HN90F	79	FF31520	STRAIGHT PIN 1520
HN90F	80	FF41817	STEP PIN 1817
HN90F	81	CN35336	CHECK PAWL
HN90F	82	KK33337	SPRING 3337
HN90F	83	FF31294	PIN 1294
HN90F	84	HN10842	FEED PAWL
HN90F	85	KK23710	COMP. SPRING 3710
HN90F	86	KK23788	COMP. SPRING 3788
HN90F	87	FF42216	STEP PIN 2216
HN90F	88	HH11111	O-RING 1AP 14 N5522(REPLACES TA15260)
HN90F	89	HN10463	FEED PISTON
HN90F	90	HH11107	O-RING AP18
HN90F	91	KK23926	COMP. SPRING 3926
HN90F	92	KK23927	COMP. SPRING 3927
HN90F	93	CN31570	CN37528 : FEED PISTON STOP
HN90F	94	HN10464	COMP. SPRING
HN90F	95	JJ22407	C-RING 26
HN90F	96	BB40460	BOLT 5 X 28
HN90F	97	HN12361	CONTACT BOLT
HN90F	98	HH11903	O-RING 1A 1.2 X 4 T29051(REPLACES TA15277)
HN90F	99	KK23952	COPM. SPRING 3952
HN90F	100	HN70378	CONTACT ARM B UNIT
HN90F	101	JJ10404	E-RING 3.2
HN90F	102	BB40427	T-BOLT 4 X 8(REPLACES TA15544)

Tool Model	Part No	Part Code	Description
HN90F	103	EE39172	WASHER 5.1X12X1.2
HN90F	104	CN31083	HOOK, DUST COVER
HN90F	105	HN12548	MAGAZINE SPACER
HN90F	106	HN10808	ARM COVER
HN90F	107	CC00401	ELASTIC STOP NUT M5
HN90F	108	TA17024	FILTER A
HN90F	109	HN12070	END CAP SEAL
HN90F	110	HN12410	END CAP
HN90F	111	BB40704	BOLT 4X12
HN90F	112	HN10316	END PLUG CAP
HN90F	113	HN70264	AIR PLUG H-FPM
HN90F	114	BB40492	T-BOLT 5X42
HN90F	115	EE31121	WASHER 1-5 (BLACK)
HN90F	116	HN70292	HOOK ASSY
HN90F	117	HN81352	MAGAZINE CAP (AFTER)
HN90F	118	HN12467	NAME LABEL
HN90F	119	CN38159	NAIL SUPPORT
HN90F	120	CN38165	E-RETAINING RING 6
HN90F	121	CN38161	PLANE WASHER 8
HN90F	122	CN38164	COMPRESSION SPRING 8164
HN90F	123	CN38163	BASE DIAL
HN90F	124	CN38160	NAIL POST
HN90F	125	KK33396	TOSSION SPRING
HN90F	126	FF31642	STRAIGHT PIN 8168
HN90F	127	HN12464	WARNING LABEL
HN90F	128	HN12468	NAILSUPPORT SWITCH LABEL
HN90F	129	HN81353	MAGAZINE (AFTER)
HN90F	130	HN12098	STRAIGHT PIN(MAGAZINE HINGE)
HN90F	131	HN10100	CONTACT LVER
HN90F	132	KK33300	SPRING 3300
HN90F	133	HS10118	TRIGGER
HN90F	134	HN10400	ARM GUIDE PIN
HN90F	135	HS10117	CONTACT ARM A GUIDE
HN90F	136	HN10817	CONTACT TIP
HN90F	137	HN10357	CONTACT BUMPER
HN90F	138	HN10401	CONTACT ARM A
HN90F	139	KK23619	COMP. SPRING 3619
HN90F	140	HN10353	TRIGGER VALVE STEM
HN90F	141	HA11031	TRIGGER VALVE CAP
HN90F	142	HN12471	DUST COVER
HN90F	143	HS10704	SCREW 6X38
HN90F	144	HN10856	FRAME HANGER
HN90F	145	HN70337	NOSE ATTACHMENT ASSY FOR HN90F
HN90F	201	HN81354	O-RING KIT
HN90F	202	HN81307	TRIGGER VALVE ASSY
HN90F	203	HN81350	ARM GUIDE KIT
HN90F	204	HN81351	MAGAZINE ASSY
HN90F	205	HN81348	SEQUENTIAL TRIP KIT
HN90F	206	HN81355	BODY HANGER KIT