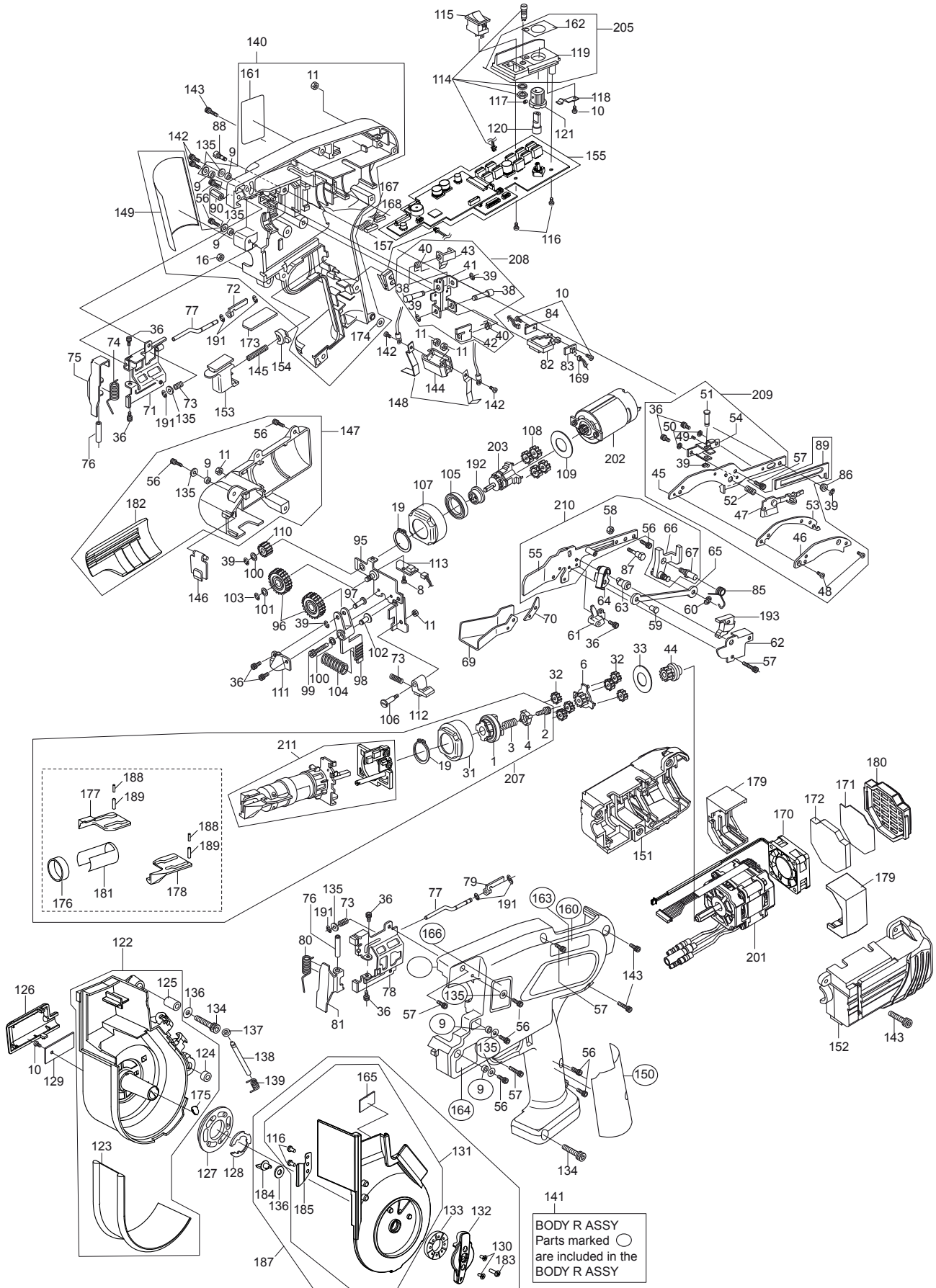


RB655

RE-BAR TYING TOOL



| Tool Model | Part NO | Part Code | Description |
|-------------------|----------------|------------------|-------------------------------------|
| RB655 | 1 | RB70025 | PLANET CAGE B UNIT |
| RB655 | 2 | BB40427 | SCREW 4X8 |
| RB655 | 3 | KK23847 | COMP. SPRING 3847 |
| RB655 | 4 | RB10344 | KEY PLATE |
| RB655 | 6 | RB70027 | SUN GEAR UNIT |
| RB655 | 8 | AA21102 | PAN-HEAD SCREW 3X4 |
| RB655 | 9 | FF51652 | PIN 1652 |
| RB655 | 10 | AA31714 | SCREW 2X4 |
| RB655 | 11 | CC41104 | HEX. NUT 1-3 |
| RB655 | 12 | PJ70084 | BATTERY CONNECTOR UNIT |
| RB655 | 16 | CC41101 | NUT 1-5 |
| RB655 | 19 | JJ21603 | C-RING 20 |
| RB655 | 31 | RB10725 | INTERNAL GEAR B |
| RB655 | 32 | RB10726 | PLANET GEAR B |
| RB655 | 33 | RB10776 | GEAR RETAINER |
| RB655 | 36 | BB40481 | BOLT 3X5 |
| RB655 | 38 | FF41822 | STEP PIN 1822 |
| RB655 | 39 | JJ10113 | E-RING 2.5 |
| RB655 | 40 | KK33249 | TORSION SPRING 3249 |
| RB655 | 41 | RB10370 | JAW BASE |
| RB655 | 42 | RB10735 | JAW B |
| RB655 | 43 | RB10779 | JAW A |
| RB655 | 44 | RB70056 | MOTOR GEAR B UNIT |
| RB655 | 45 | RB70026 | ARM A UNIT |
| RB655 | 46 | RB70036 | WIRE GUIDE A2 UNIT |
| RB655 | 47 | RB70276 | WIRE GUIDE UNIT |
| RB655 | 48 | AA22415 | SCREW 3X8 |
| RB655 | 49 | AA71408 | SCREW 3X3 |
| RB655 | 50 | EE31801 | WASHER 3.2x7, REPLACES EE31127 |
| RB655 | 51 | FF41729 | STEP PIN 1729 |
| RB655 | 52 | KK23849 | COMP. SPRING 3849 |
| RB655 | 53 | RB10737 | WIRE GUIDE A1 |
| RB655 | 54 | RB10743 | WIRE GUIDE BASE |
| RB655 | 55 | RB70039 | ARM B UNIT |
| RB655 | 56 | BB40425 | BOLT 3X10 |
| RB655 | 57 | BB40810 | BOLT 3X15 |
| RB655 | 58 | CC41103 | HEX. NUT 1-4 |
| RB655 | 59 | FF41730 | STEP PIN 1730 |
| RB655 | 60 | JJ10509 | E-RING 4CF, REPLACES JJ10101 |
| RB655 | 61 | RB10746 | WIRE GUIDE B |
| RB655 | 62 | RB10747 | ARM C |
| RB655 | 63 | RB10748 | FIXED CUTTER |
| RB655 | 64 | RB10749 | CUTTER |
| RB655 | 65 | RB10750 | CUTTER CONNECTING ROD |
| RB655 | 66 | RB70277 | CUTTER LEVER UNIT, REPLACES RB11766 |
| RB655 | 67 | RB11767 | CUTTER SHAFT, REPLACES RB10752 |
| RB655 | 69 | RB10754 | CURL GUIDE A |
| RB655 | 70 | RB10755 | CURL GUIDE B |
| RB655 | 71 | RB70041 | COVER L UNIT |
| RB655 | 72 | RB70042 | MAGNET HOLDER L UNIT |
| RB655 | 73 | KK23850 | COMPRESSION SPRING 3848 |

| Tool Model | Part NO | Part Code | Description |
|-------------------|----------------|------------------|--|
| RB655 | 74 | KK33328 | TORSION SPRING 3328 |
| RB655 | 75 | RB70369 | TWIST GUIDE COVER L |
| RB655 | 76 | RB10759 | TWIST GUIDE SHAFT |
| RB655 | 77 | RB11667 | SENSOR ROD, REPLACES RB10762 |
| RB655 | 78 | RB70044 | COVER R UNIT |
| RB655 | 79 | RB70045 | MAGNET HOLDER R UNIT |
| RB655 | 80 | KK33330 | TORSION SPRING 3330 |
| RB655 | 81 | RB70370 | TWIST GUIDE COVER R |
| RB655 | 82 | RB10765 | SENSOR BASE |
| RB655 | 83 | RB70080 | SENSOR BOARD D UNIT |
| RB655 | 84 | RB70081 | SENSOR BOARD E UNIT |
| RB655 | 85 | KK33329 | TORSION SPRING 3329 |
| RB655 | 86 | LL62013 | PLAIN BEARING B-F3-1 |
| RB655 | 87 | RB11768 | ARM B SET SCREW |
| RB655 | 88 | RB10739 | ARM A SET SCREW |
| RB655 | 89 | RB10740 | WIRE GUIDE LEVER |
| RB655 | 90 | CC49118 | HEX. NUT 3X7.5 |
| RB655 | 95 | RB70278 | FEEDING GEAR BASE ASSY, REPLACES RB70053 |
| RB655 | 96 | RB70299 | FEEDING GEAR B UNIT, REPLACES RB70054 |
| RB655 | 97 | FF41728 | STEP PIN 1728 |
| RB655 | 98 | RB10775 | RELEASE LEVER |
| RB655 | 99 | BB40420 | BOLT 4X16 |
| RB655 | 100 | EE39121 | PLAIN WASHER 5 |
| RB655 | 101 | EE39168 | WASHER 4.2X1.3X1 |
| RB655 | 102 | FF51628 | HOLLOW PIN 1628 |
| RB655 | 103 | JJ10514 | E-RING 3CF, REPLACES JJ10112 |
| RB655 | 104 | KK23851 | COMP. SPRING 3851 |
| RB655 | 105 | LL11181 | WHEEL 6704 |
| RB655 | 106 | RB10043 | STEP PIN |
| RB655 | 107 | RB10338 | INTERNAL GEAR |
| RB655 | 108 | RB10341 | PLANET GEAR |
| RB655 | 109 | RB10484 | GEAR PRESS WHEEL |
| RB655 | 110 | RB10770 | FEED GEAR A |
| RB655 | 111 | RB10774 | WIRE GUIDE C |
| RB655 | 112 | RB10852 | RELEASE STOPPER |
| RB655 | 113 | RB70079 | SENSOR BOARD C UNIT |
| RB655 | 114 | RB70087 | WARNING LED UNIT |
| RB655 | 115 | RB70341 | MAIN SWITCH UNIT, REPLACES RB70091 |
| RB655 | 116 | AA31721 | SCREW 3X6, REPLACES AA31504 |
| RB655 | 117 | AA74410 | SCREW 3X6 |
| RB655 | 118 | RB10400 | LEAF SPRING |
| RB655 | 119 | RB10536 | MAIN SWITCH BASE |
| RB655 | 120 | RB11709 | JOINT DIAL (Non philips), REPLACES RB10537 |
| RB655 | 121 | RB10853 | TORQUE DIAL |
| RB655 | 122 | RB81102 | MAGAZINE ASSY, REPLACES RB70115 |
| RB655 | 123 | RB10783 | PROTECTOR |
| RB655 | 124 | RB10785 | BUSH A |
| RB655 | 125 | RB10786 | BUSH B |
| RB655 | 126 | RB10787 | SENSOR COVER |
| RB655 | 127 | RB10791 | SENSOR COVER PLATE, |
| RB655 | 128 | RB10792 | RETAINING RING |

| Tool Model | Part NO | Part Code | Description |
|-------------------|----------------|------------------|--|
| RB655 | 129 | RB70082 | SENSOR BOARD F UNIT |
| RB655 | 130 | AA32708 | SCREW 2.6X6 |
| RB655 | 131 | RB81108 | MAGAZINE COVER KIT, REPLACES RB81103 |
| RB655 | 132 | RB11774 | MAGAZINE COVER LOCK |
| RB655 | 133 | RB10806 | ADJUST RING |
| RB655 | 134 | BB40405 | BOLT 5X25 |
| RB655 | 135 | EE32104 | WASHER 2-3 |
| RB655 | 136 | EE39172 | PLAIN WASHER 5.1X12X1.2 |
| RB655 | 137 | EE39602 | RUBBER WASHER 7, REPLACES EE39604, EE39623 |
| RB655 | 138 | FF31289 | PIN 1289 |
| RB655 | 139 | KK33327 | TORSION SPRING 3327 |
| RB655 | 140 | RB81106 | FRAME L ASSY |
| RB655 | 141 | RB81107 | FRAME R ASSY |
| RB655 | 142 | BB40410 | BOLT 3X8 |
| RB655 | 143 | BB40811 | BOLT 3X25 |
| RB655 | 144 | RB10970 | ELECTRODE BLOCK |
| RB655 | 145 | KK23656 | COMPRESSION SPRING 3656 |
| RB655 | 146 | RB10213 | WINDOW |
| RB655 | 147 | RB81034 | MOTOR COVER ASSY |
| RB655 | 148 | RB11769 | ELECTRIC PLATE |
| RB655 | 149 | RB10795 | GRIP COVER L |
| RB655 | 150 | RB10796 | GRIP COVER R |
| RB655 | 151 | RB70354 | MOTOR HOUSING L |
| RB655 | 152 | RB11882 | MOTOR HOUSING R |
| RB655 | 153 | RB10854 | TRIGGER |
| RB655 | 154 | RB10855 | TRIGGER LOCK |
| RB655 | 155 | RB70496 | MAIN PWB UNIT, REPLACES RB70367 |
| RB655 | 157 | RB70101 | TRIGGER SWITCH |
| RB655 | 160 | RB10423 | LABEL MAIN SWITCH |
| RB655 | 161 | RB10421 | LABEL FCC |
| RB655 | 162 | RB10799 | TORQUE ADJUSTMENT LABEL |
| RB655 | 163 | RB11921 | NAME LABEL (USA) |
| RB655 | 164 | RB10846 | WIRE LOADING LABEL |
| RB655 | 165 | RB10847 | WIRE SETTING LABEL |
| RB655 | 166 | RB10962 | ARM CAUTION LABEL |
| RB655 | 167 | RB70587 | HARNESS 11P UNIT REPLACES RB70084 |
| RB655 | 168 | RB70085 | HARNESS 7P UNIT |
| RB655 | 169 | RB70086 | HARNESS 3P UNIT |
| RB655 | 170 | RB70339 | FAN UNIT |
| RB655 | 171 | RB11884 | FILTER A |
| RB655 | 172 | RB11885 | FILTER B |
| RB655 | 173 | RB11004 | PROTECTOR C |
| RB655 | 174 | EE39830 | SPECIAL PLAIN WASHER 5.1X9 |
| RB655 | 175 | RB11777 | STOPPER PLATE |
| RB655 | 176 | RB10718 | SLEEVE GUIDE |
| RB655 | 177 | RB11762 | HOOK L |
| RB655 | 178 | RB11763 | HOOK R |
| RB655 | 179 | RB11886 | FAN PROTECTOR |
| RB655 | 180 | RB11883 | FILTER COVER |
| RB655 | 181 | RB10724 | SLEEVE COVER |
| RB655 | 182 | RB11003 | PROTECTOR B |

| Tool Model | Part NO | Part Code | Description |
|-------------------|----------------|------------------|--------------------------------------|
| RB655 | 183 | CK10198 | SCREW 3x10 |
| RB655 | 184 | RB11775 | BINDING HEAD SCREW |
| RB655 | 185 | RB11776 | MAGAZINE LEAF SPRING |
| RB655 | 187 | RB81108 | MAGAZINE COVER KIT, REPLACES RB81103 |
| RB655 | 188 | FF31559 | PIN 1559 |
| RB655 | 189 | FF51656 | PIN 1656 |
| RB655 | 191 | JJ10510 | RETAINING RING 2.3, REPLACES JJ10104 |
| RB655 | 192 | RB70217 | MAGNET HOLDER UNIT |
| RB655 | 193 | RB11666 | ARM COVER |
| RB655 | 201 | RB70349 | TWISTING MOTOR TD5046 UNIT |
| RB655 | 202 | RB70351 | FEEDING MOTOR RS-55VC UNIT |
| RB655 | 203 | RB70222 | FEED GEAR SHAFT, REPLACES RB70050 |
| RB655 | 205 | RB70113 | MAIN SWITCH BASE ASSY |
| RB655 | 207 | RB70284 | TWISTER ASSY |
| RB655 | 208 | RB70033 | FINGER BASE ASSY |
| RB655 | 209 | RB70281 | ARM A ASSY, REPLACES RB70035 |
| RB655 | 210 | RB70285 | ARM B ASSY |
| RB655 | 211 | RB70284 | TWISTER ASSY |